

Welcome

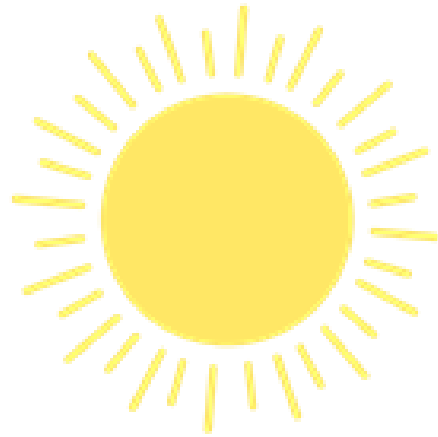
New Parents Evening 2026-2027



The Foundation Stage Team



Mrs New



Miss Arnold



Mrs Thomas



Mrs Gogerly



Miss Calvert



Mrs Lamb



Miss Clark



Mrs Moore



Mrs Lines



Mrs Bubb

The school day

- The gate opens at **8.35am** where they will come in and begin an Early Work task
- School finishes at 3.10pm
- For the first day of school you are welcome to bring your child into the classroom and help them find their peg and tray.
- If you are late please enter school through the main school gate where Mrs Greenaway or Miss Calvert will sign you in.



School uniform

Our uniform consists of:

- Grey school trousers, shorts or pinafore dresses
- White polo shirt
- Maroon sweatshirt or cardigan (with or without school logo)
- Maroon school fleece
- Summer dress – maroon or dark red check patterned dress
- Footwear - Children should wear brown or black sturdy shoes.
- Black trainers (without logo, stripes or different coloured laces) may be worn, but you will need a change of shoes for PE.

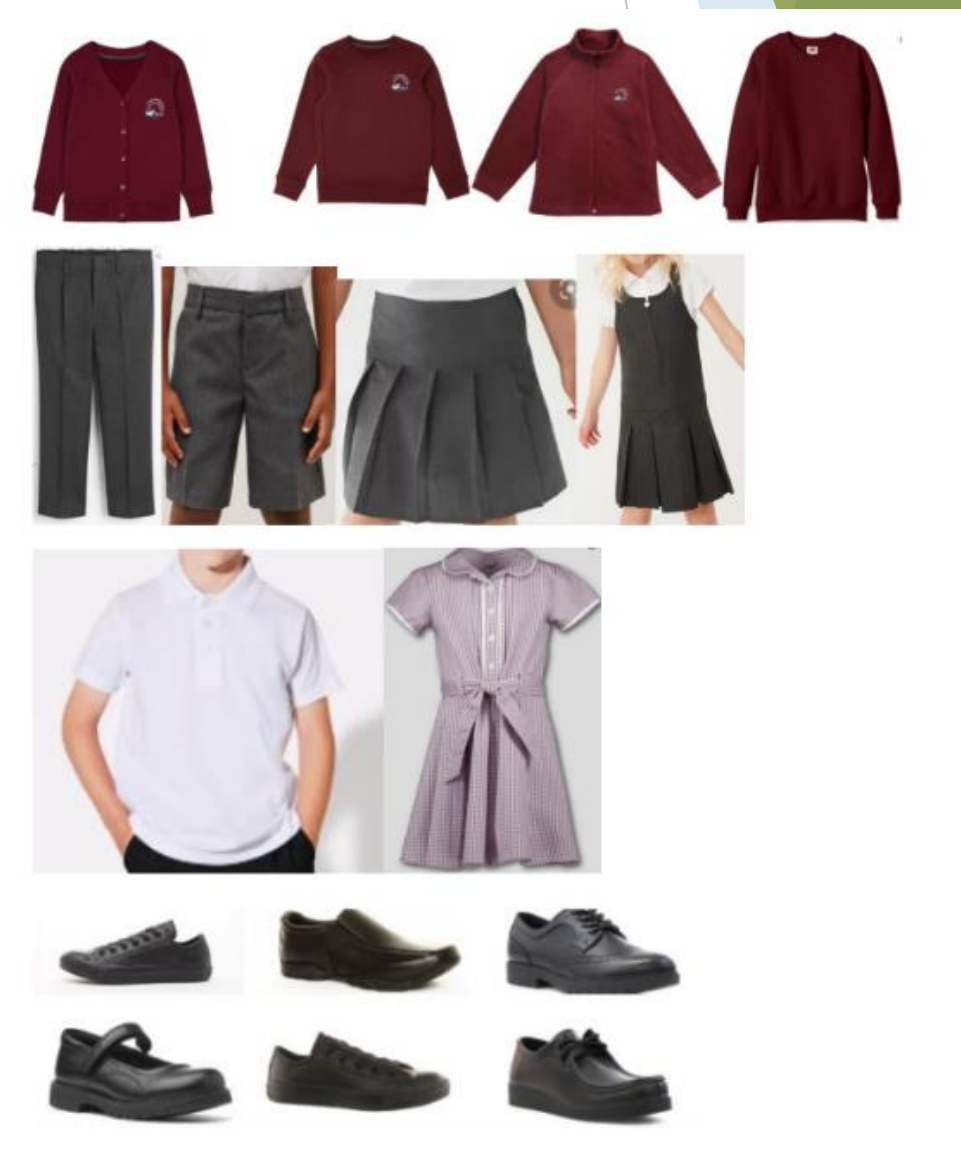


**LABEL,
LABEL, LABEL!**

Please make sure all items of clothing are clearly labelled with your child's name.

It helps us return lost items quickly – and saves you money and stress!

Please check school website for purchasing information.



Outdoor Play

Outdoor play and Art - Please send in named Welly Boots and a named puddle suit for children to use during outdoor play to protect against the elements and keep their uniform dry and clean. These can remain in school.

We also ask that all children have a **full change of clothes** in a bag to remain on their peg in case of toileting accidents or getting too wet in the water area.



**LABEL,
LABEL, LABEL!**

Please make sure all items of clothing are clearly labelled with your child's name.

It helps us return lost items quickly — and saves you money and stress!



Healthy snacks

- The children are provided with a piece of fruit everyday.
- The children are encouraged to drink water throughout the day. Please send in a named, full water bottle daily.
- Children have milk in the afternoons in Foundation Stage until the age of 5. You can purchase it via the office if you wish your child to continue having milk when they are 5.
- If your child is allergic to cows milk then you can bring in a milk substitute to school.



School meals

- All Early years and Key Stage 1 children are entitled to a free school meal each day. There will be a selection of different meals available each day for your child to choose from. Vegetarian options are always available. **Please let us know if your child has any other dietary restrictions or requirements.**
- Please help the children to practice using a knife and fork.
- Healthy packed lunches please
- We are a NUT FREE school as this can be fatal to some children in our school who suffer from nut allergies.



Reception Baseline Assessment

This is a statutory assessment conducted for all reception children nationwide, focusing on Literacy, Communication & Language, and Maths. It involves short, practical activities completed with their teacher. Importantly, the children are not aware they're being assessed, and there's no need for them to prepare in advance, so there's no cause for concern.

The assessment serves to measure progress from reception through to year 6, providing insights into each child's development over time.



Phonics and Reading

- We begin RWI phonics right from the start.
- You can find out more on our phonics and reading pages on the website.
- Library book will be sent home once a week to read together.



PE

- The children will have a PE session each week and lots of other opportunities for physical activity both inside and outside.
- For the first term children can come to school in their PE kit on PE days.
- From January, children will need to bring their PE kit to school to change.
- Please make your child as independent as possible when getting dressed / undressed and putting their coats on.

- PE Kit:
Inclusive sportswear



**LABEL,
LABEL, LABEL!**

Please make sure all items of clothing are clearly labelled with your child's name.

It helps us return lost items quickly – and saves you money and stress!



Transition into school

3 ways to promote a smooth transition into school.

- Nursery visits
- Stay and Play – Monday 13th July 10-11
- Home visits – Tuesday 14th am or pm, Wednesday 15th am or pm and Thursday 16th am or pm

The teacher and teaching assistant can see the child's own environment. Date and time and class included in your envelope

Working in partnership

- Our aim is to form strong links to enhance your child's learning. We will be holding 'Play and Stay' sessions throughout the year.
- We love showing you what the children have been learning through Instagram.



TSA and Wraparound Care

- Thameside School Association (TSA) are always looking for new members so please contact the office if you would like to get involved.
- Wraparound care – breakfast and aftercare (8am – 6pm). Term time only.
- Application forms available tonight
- For more information contact the office

School information

- The school news letter is e-mailed to parents every Friday. It tells you what is going on in school and has key dates.
- We send out key messages via email at the end of every day.
- The school office are able to send text messages to update you with any on going information. Please ensure that we have your correct mobile phone number.

The Family Hub

The Family Hub is:

- The Hub is a safe place to talk.
- A place that is part of the Thameside community where families can come and talk, express concerns or get advice about something.
- The Hub is accessible for any parent or carer of a Thameside child.
- The Hub can support families in many ways eg, parent meetings, paperwork and forms, meetings with Thameside staff or external professionals.
- Helps support families with home or school life.
- Attendance – Looks at improving attendance and supporting families.



Sophie Roseaman runs the Hub on a Wednesday, Thursday and Friday during the school day.

Contact information:

familyhub@Thameside.reading.sch.uk

01189375551

07904327322

How can you help?

- Dress independently
- Use the toilet and wash hands without help
- Share lots of stories with your child and ensure there is plenty of talk
- Sing simple songs and rhymes
- Practice fine motor skills such as cutting and pencil grip
- Recognise and write their name
- Speak positively about school and this exciting new chapter!



To do:

- Complete online forms if you have not already done so
- Let us know if you are unable to attend the Stay-and Play session and home visits
- Prepare uniform
- Read the Parent Handbook online
- Check out the New Starters page on our website.
- Ask us any questions that you may have.

- We are really looking forward to meeting you soon!

And finally!



We will be visiting classrooms where you can meet your teacher